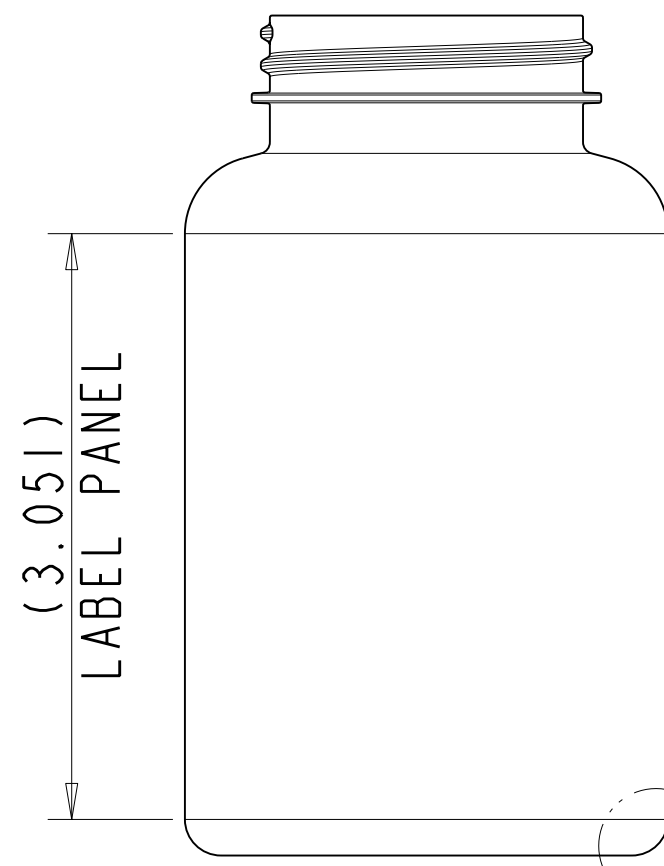
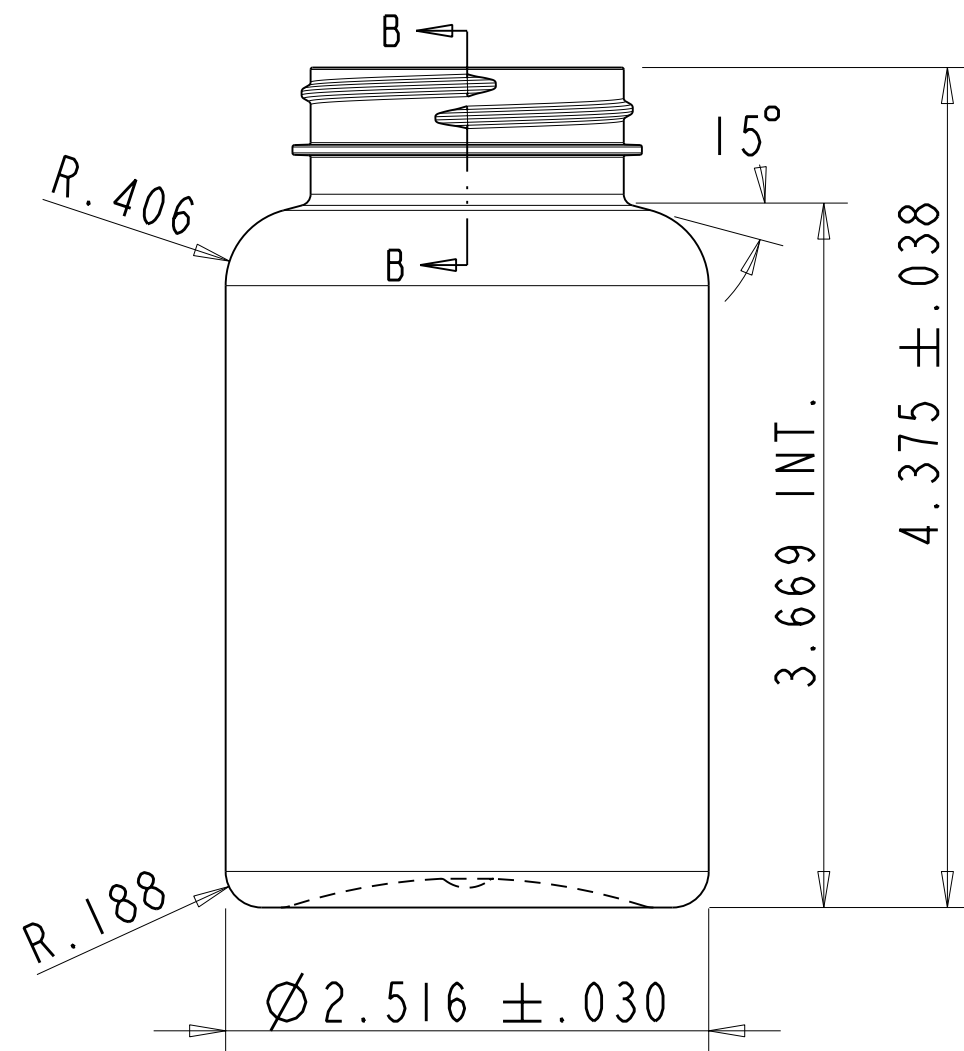
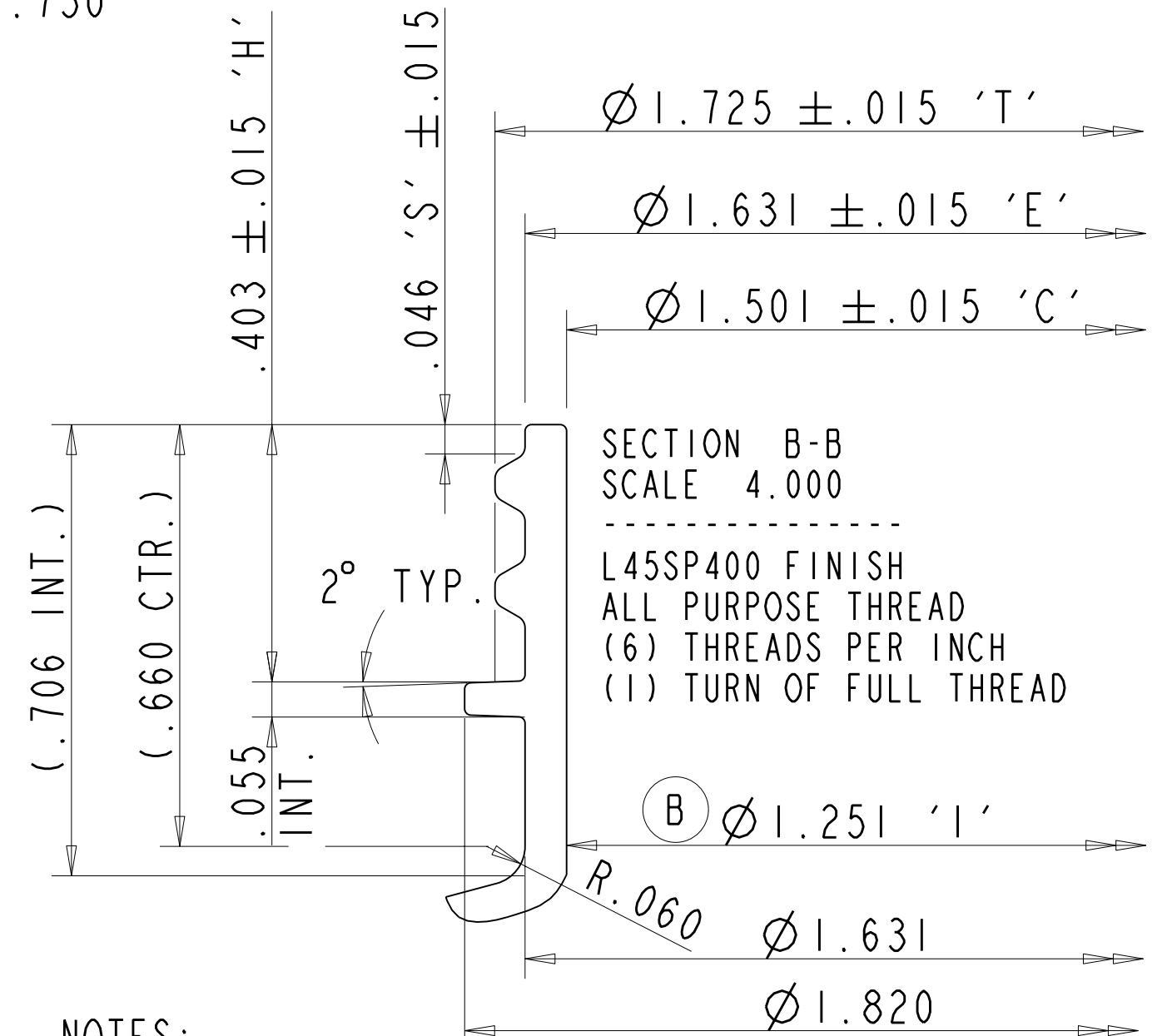


SCALE 0.750

REV	DATE	BY	REVISION
A	102715	ES	REDRAWN FROM DWG. C-956PD-R1.
B	012216	ES	ADDED 'I' DIM.
C	040817	ES	ADDED MIN. WALL NOTE.
D	050917	ES	UPDATED PUSHUP ENGRAVING.
E	081518	ES	ADDED .012" MIN. WALL LOCATION.



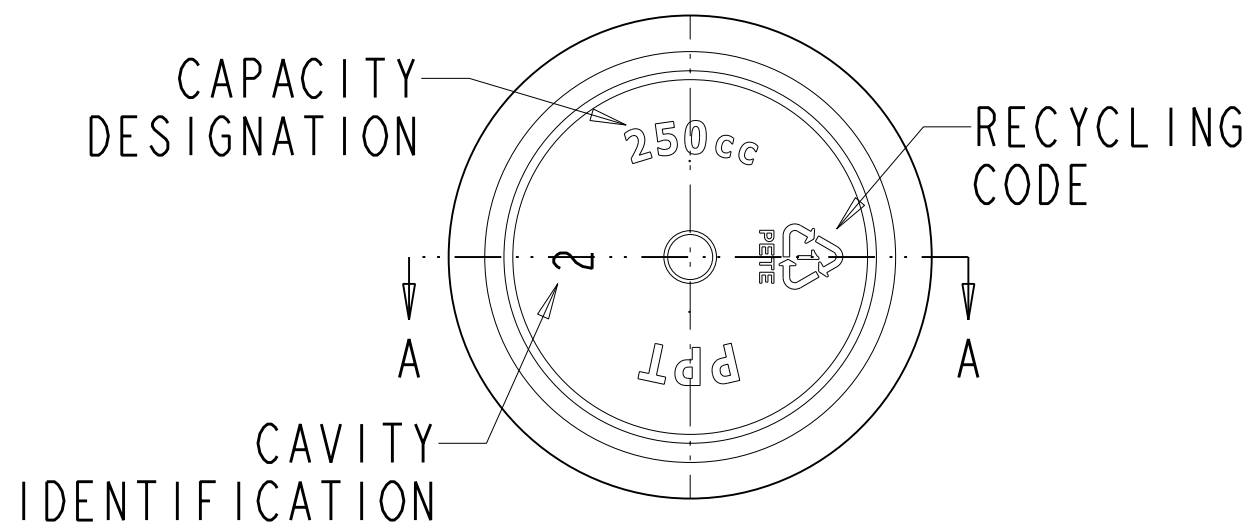
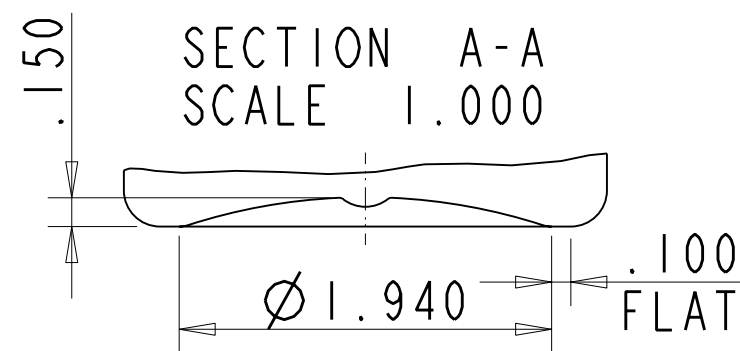
Ø .012" MIN. WALL
E



SECTION B-B
SCALE 4.000
L45SP400 FINISH
ALL PURPOSE THREAD
(6) THREADS PER INCH
(1) TURN OF FULL THREAD

NOTES:

- 1 - MOLD NO. - 400119
- 2 - MAX. VARIATION IN AVERAGE DIAMETER BETWEEN TOP AND BOTTOM NOT TO EXCEED .010
- 3 - ALL DIMENSIONS APPLY AS MOLDED
- 4 - MAXIMUM OUT OF ROUNDNESS ON BODY OF CONTAINER NOT TO EXCEED .015
- 5 - MIN. WALL .012".



RESTRICTED, CONFIDENTIAL DOCUMENT

THIS DOCUMENT AND THE INFORMATION THEREON IS THE SOLE AND EXCLUSIVE PROPERTY OF PERFORMANCE PLASTIC TECHNOLOGIES AND/OR ITS DESIGNATED DISTRIBUTOR ABOVE. IT IS BEING ENTRUSTED TO RECIPIENT FOR A SPECIFIC LIMITED PURPOSE AND MAY BE USED ONLY FOR SUCH PURPOSE. BY ACCEPTING THIS DOCUMENT, THE RECIPIENT AGREES THAT HE WILL ENSURE THAT THE DOCUMENT AND ALL INFORMATION THEREON: (1) WILL BE MAINTAINED IN STRICTEST CONFIDENCE; (2) WILL NOT BE REPRODUCED, IN WHOLE OR IN PART, IN ANY MANNER WHATSOEVER WITHOUT THE EXPRESS WRITTEN APPROVAL OF PPT; (3) WILL NOT BE DISCLOSED DIRECTLY OR INDIRECTLY, IN ANY MANNER OR FORM, TO ANY THIRD PARTY WITHOUT THE EXPRESS WRITTEN APPROVAL OF PPT AND; (4) WILL BE PROMPTLY AND VOLUNTARILY RETURNED, WITH ANY AND ALL COPIES, TO PPT WHEN IT HAS SERVED THE PURPOSE INTENDED BY PPT, OR AT THE REQUEST OF PPT.



250 cc CT ROUND WIDE MOUTH PACKER
L45SP400 FINISH

35.40 SQUARE INCHES	9.39 SQUARE INCHES	28 ±1	PET	293 ±9 cc (9.91 ±.30 fl oz)
SURFACE AREA BELOW BASE OF NECK	AREA AT PART LINE BELOW BASE OF NECK	GRAMS	MAT'L.	OVERFLOW CAPACITY

FILE NAME:
XXXX_250cc-STR-SIDE
(15-022-01-E)

SIZE C DRAWN BY: ES DWG NO. 3200-0203-E
SCALE: 1,4:1 DATE: 09-30-2015 SHEET 1 OF 1